



Building Well-Being Health and the Built Environment

Sara Jensen Carr
Assistant Professor of
Environmental Design and
Public Health
School of Architecture
University of Hawai'i Manoa
HPHA Annual Meeting 2015

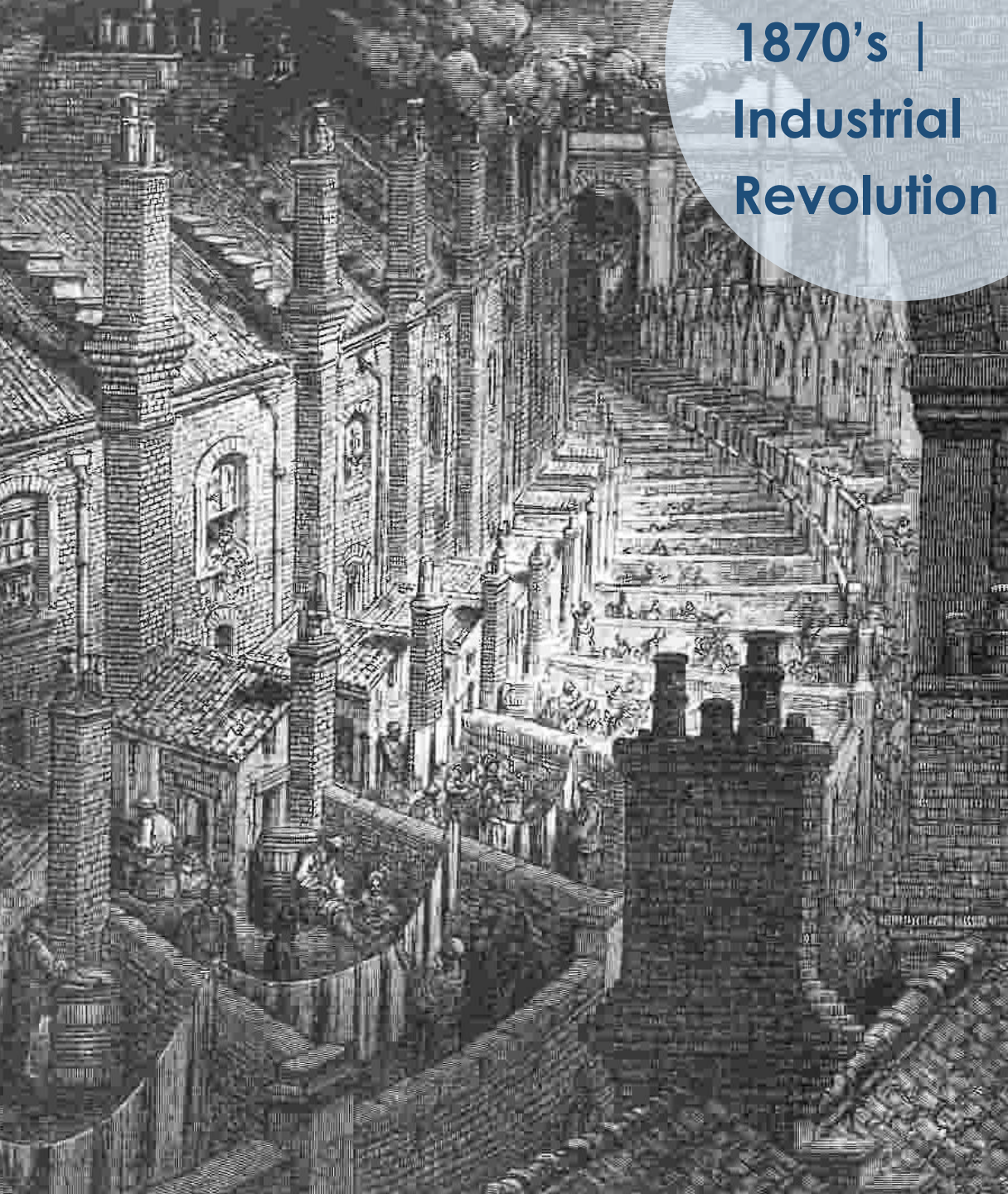


**Public
interest**

**Public
Health**

**Public
Realm**

1870's |
Industrial
Revolution



2015 |
Present
Day





"A Court for King Cholera," from *Punch* magazine, 1852 (LIFE Magazine Archives)



Sanitary infrastructure in Kearney, NE, 1889, (Solomon Butcher, Nebraska Historical Society)

From cover of *Scientific American*, 1885. (Collection of Jon C. Schladweiler, Pima County Wastewater Management Department)

SCIENTIFIC AMERICAN

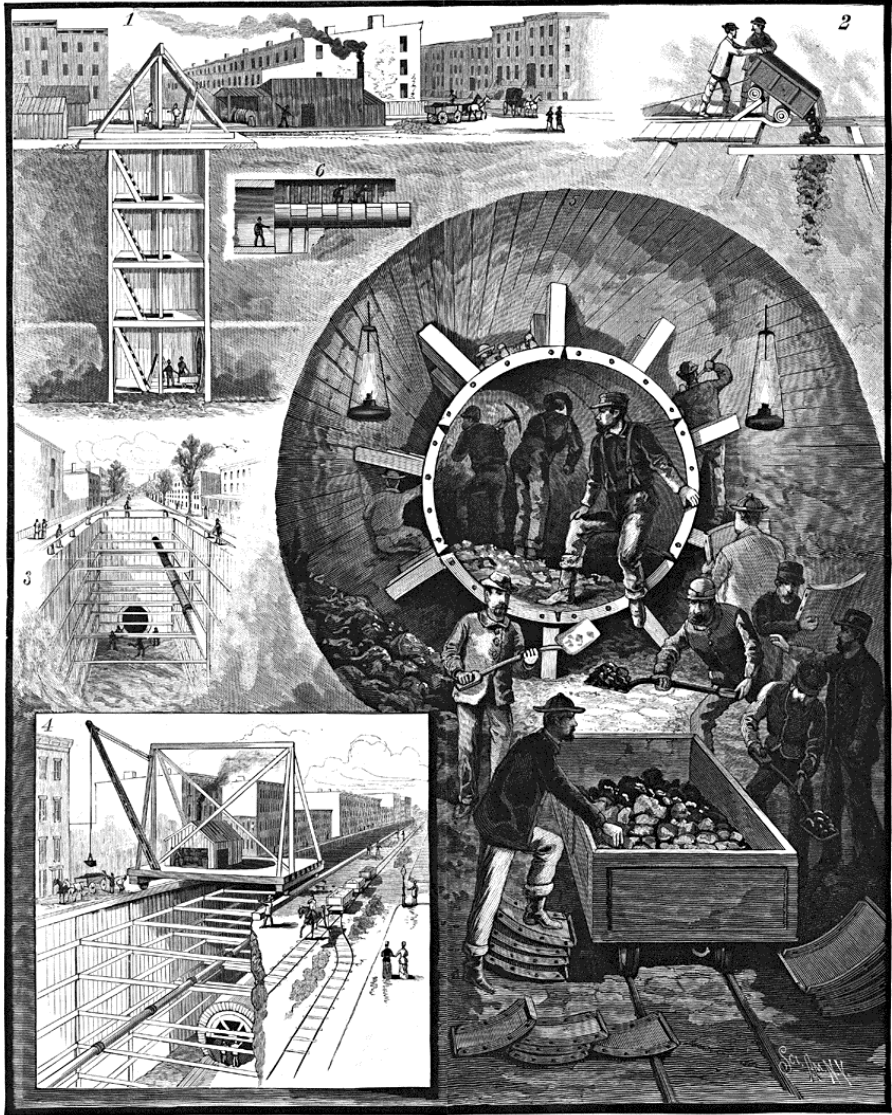
[Entered at the Post Office of New York, N. Y., as Second Class Matter.]

A WEEKLY JOURNAL OF PRACTICAL INFORMATION, ART, SCIENCE, MECHANICS, CHEMISTRY, AND MANUFACTURES.

Vol. LXXX. No. 21.

NEW YORK, DECEMBER 12, 1885.

\$3.20 per Annum.
[POSTAGE PREPAID.]



A GREAT SEWER BUILT BY AN IMPROVED METHOD OF TUNNELING, IN BROOKLYN, N. Y.—[See page 378.]



Central Park, 1925 (Library of Congress)



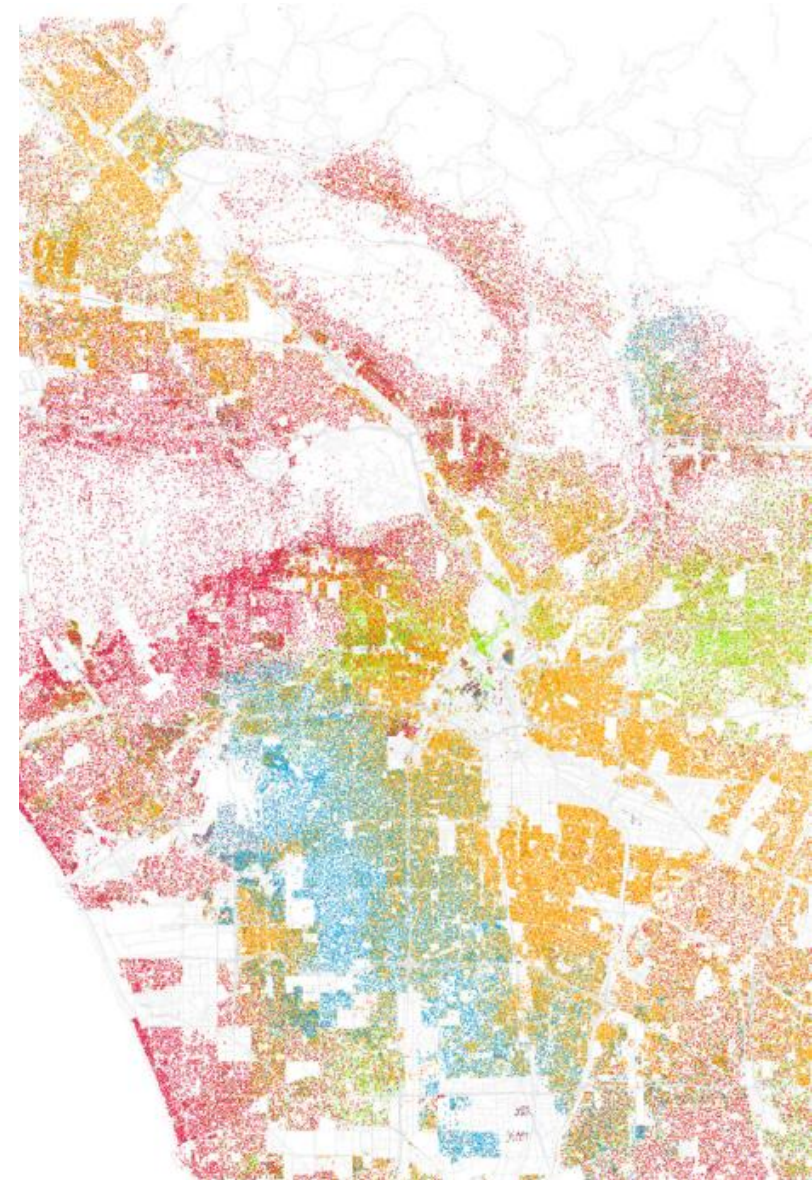
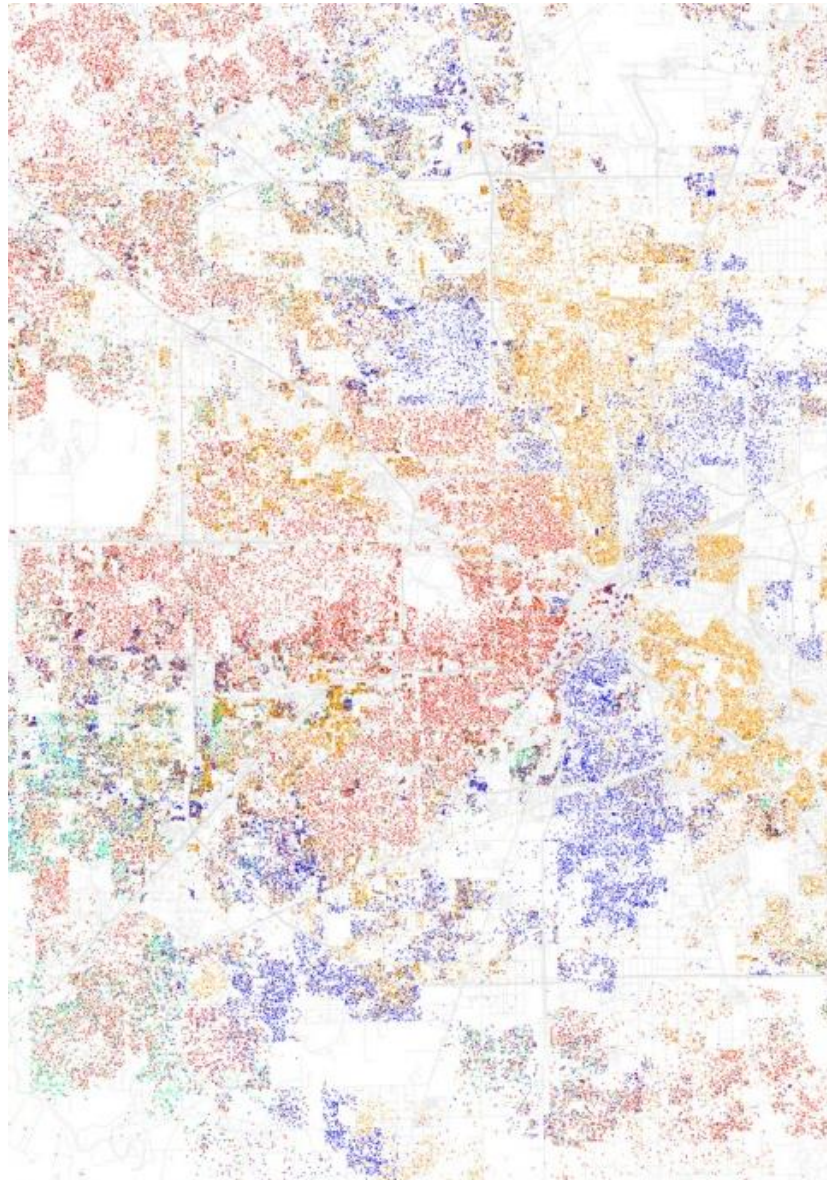
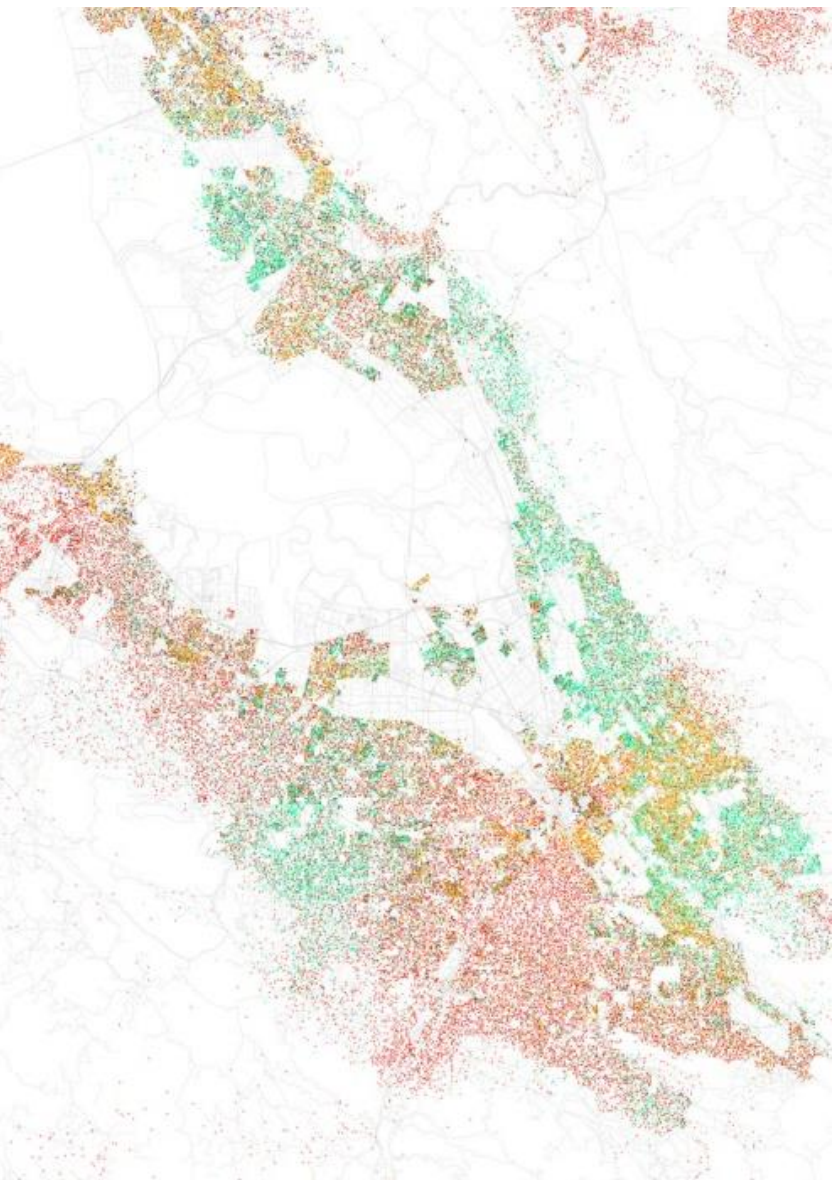
Radburn, NJ, 1928, Clarence Stein and Henry Wright (Source Unknown, courtesy University of California Visual Resources Center)



UNTITLED XXXI Arizona (Christoph Gielen)



Where people walk (left) and where people drive (right) in Los Angeles, CA (*Cities.human.co*)

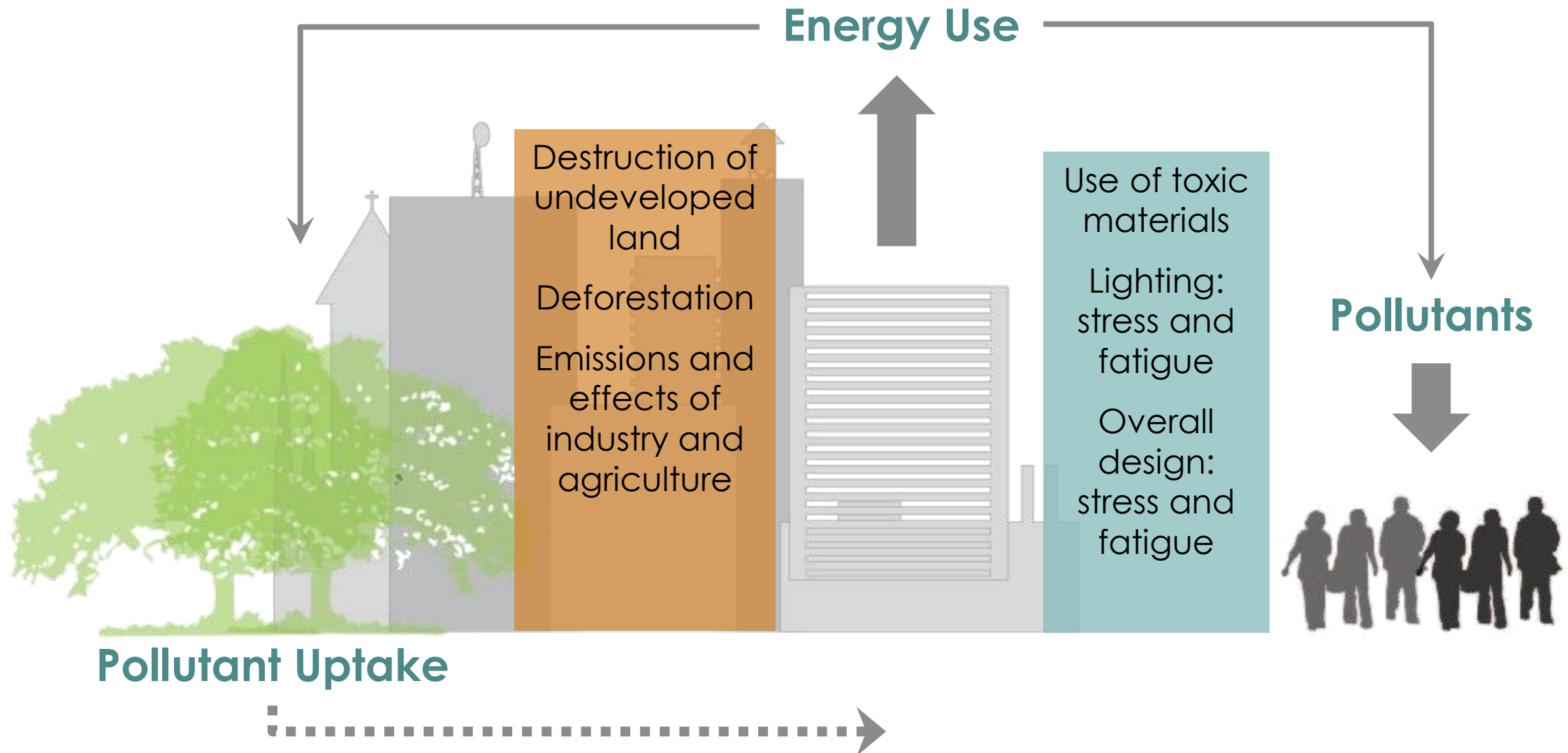


Race and ethnicity in San Jose, Houston, and Los Angeles (Eric Fischer, 2010 Census)

See also:

Berube, Alan, et al. "State of metropolitan America: On the front lines of demographic transformation." *Brookings Institution Metropolitan Policy Program* (2010).

Frameworks of Health and
the Built Environment:
DIRECT EFFECTS



● ● ● | Frameworks of Health and the Built Environment:
INDIRECT EFFECTS

Supportive
Infrastructure



Destinations in walking/biking proximity

Reliance on energy-heavy features (elevators, lights, heating/cooling)

Personal auto use

Daily physical activity and stress levels

Social Capital

Psychological
Motivations

Behavioral
influence





Contemporary
topics



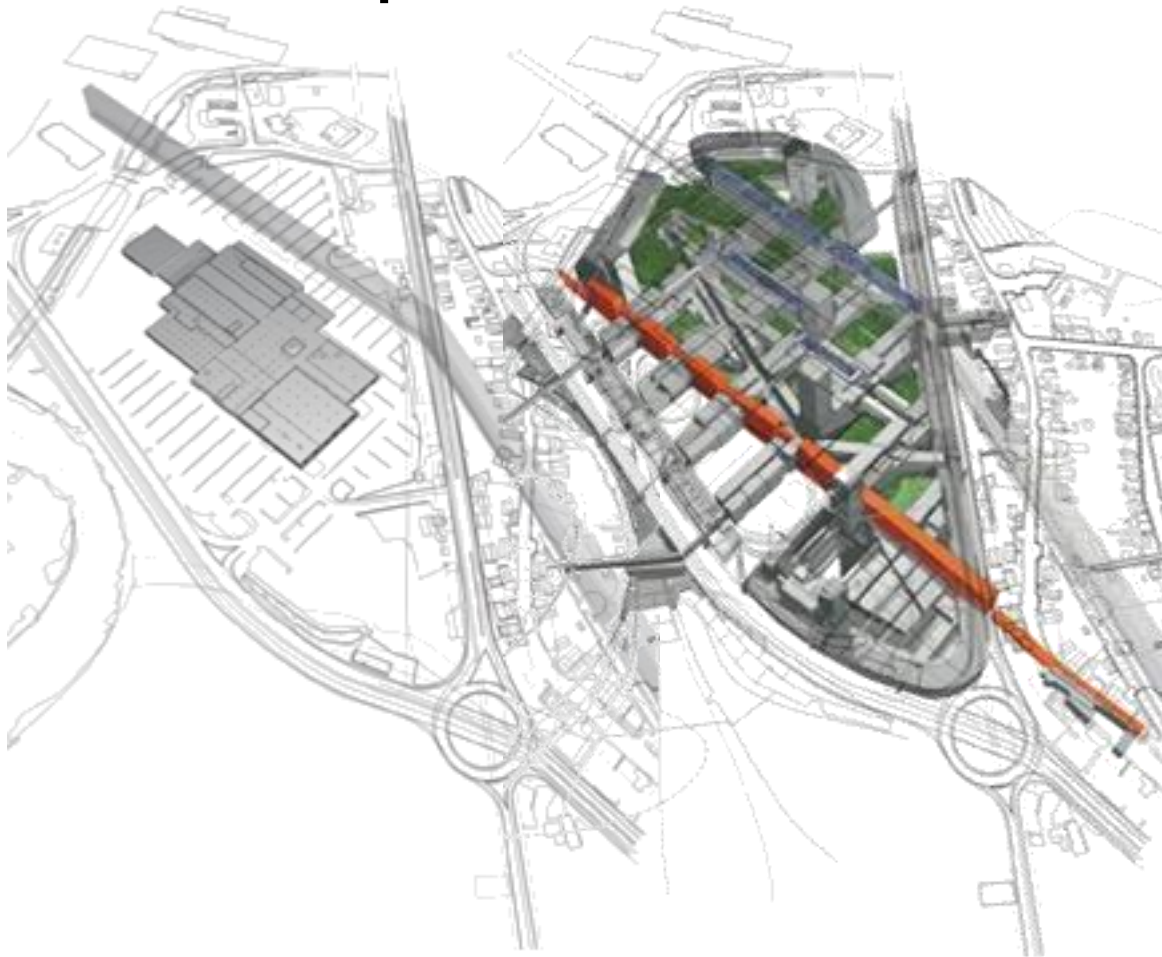
Built environment and health studies

39 between 1993 and 2002

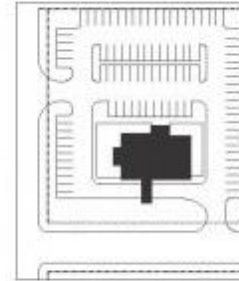
675 September 2003 through May 2013

Jackson, Dannenberg, and Frumkin (2013)

Contemporary topics: WALKABLE COMMUNITIES



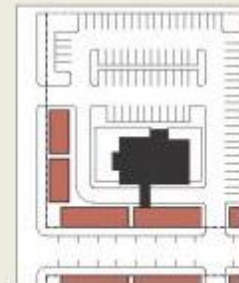
BEFORE



Existing Suburban
Restaurant Pad



AFTER



Proposed Liners



Contemporary topics:
WALKABLE
COMMUNITIES

walk[™] with a
DOC



Courtesy Walk with a Doc Big Island

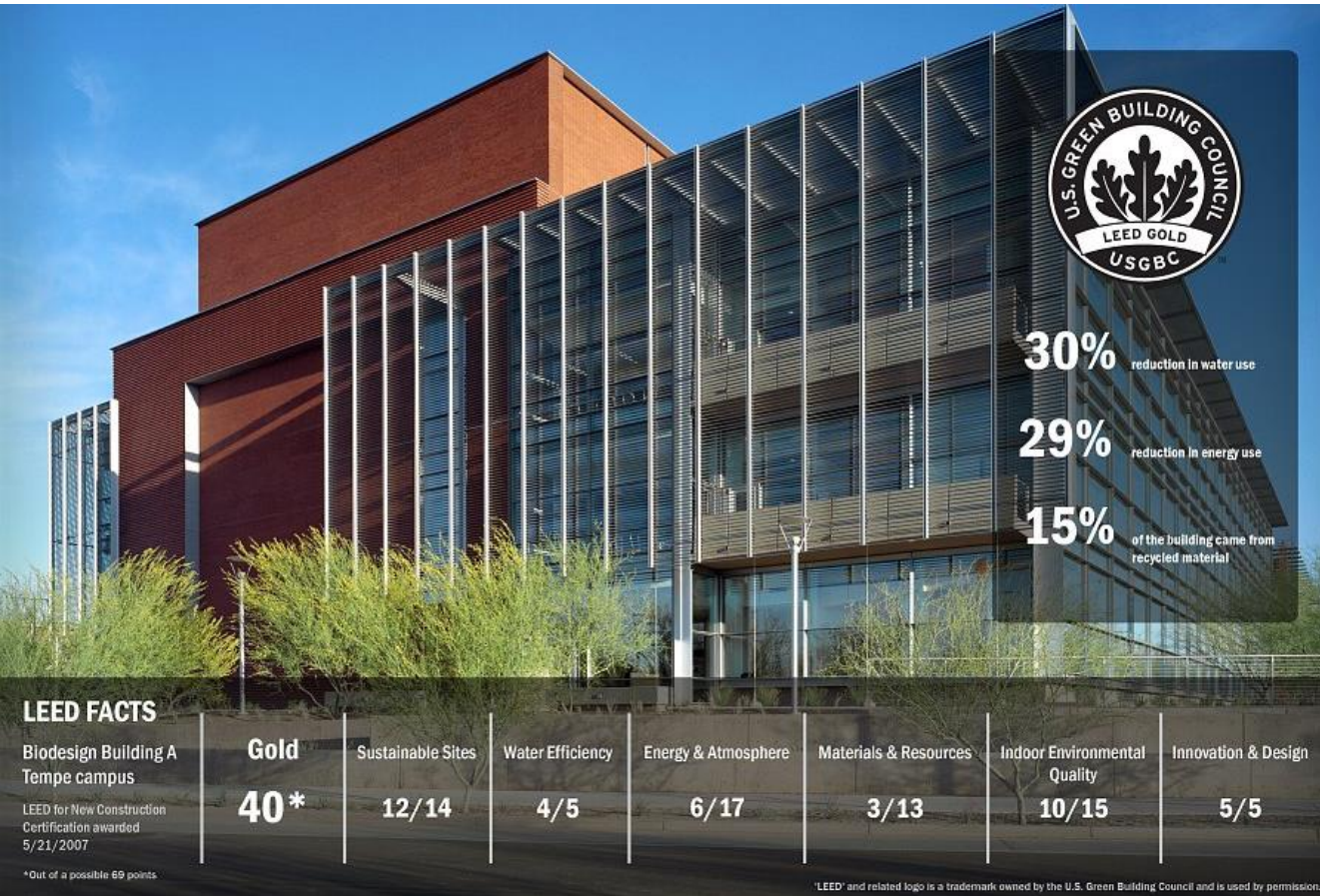
Contemporary topics:
ACTIVE DESIGN



Contemporary topics:
NATURE AND MENTAL
HEALTH



Contemporary topics: CLIMATE CHANGE



Contemporary topics:
HEALTHY FOOD ACCESS



Health at all
scales

Environmental
Design



Healthcare

Healing Environments
Controlled Observation/Intervention
Specialized populations



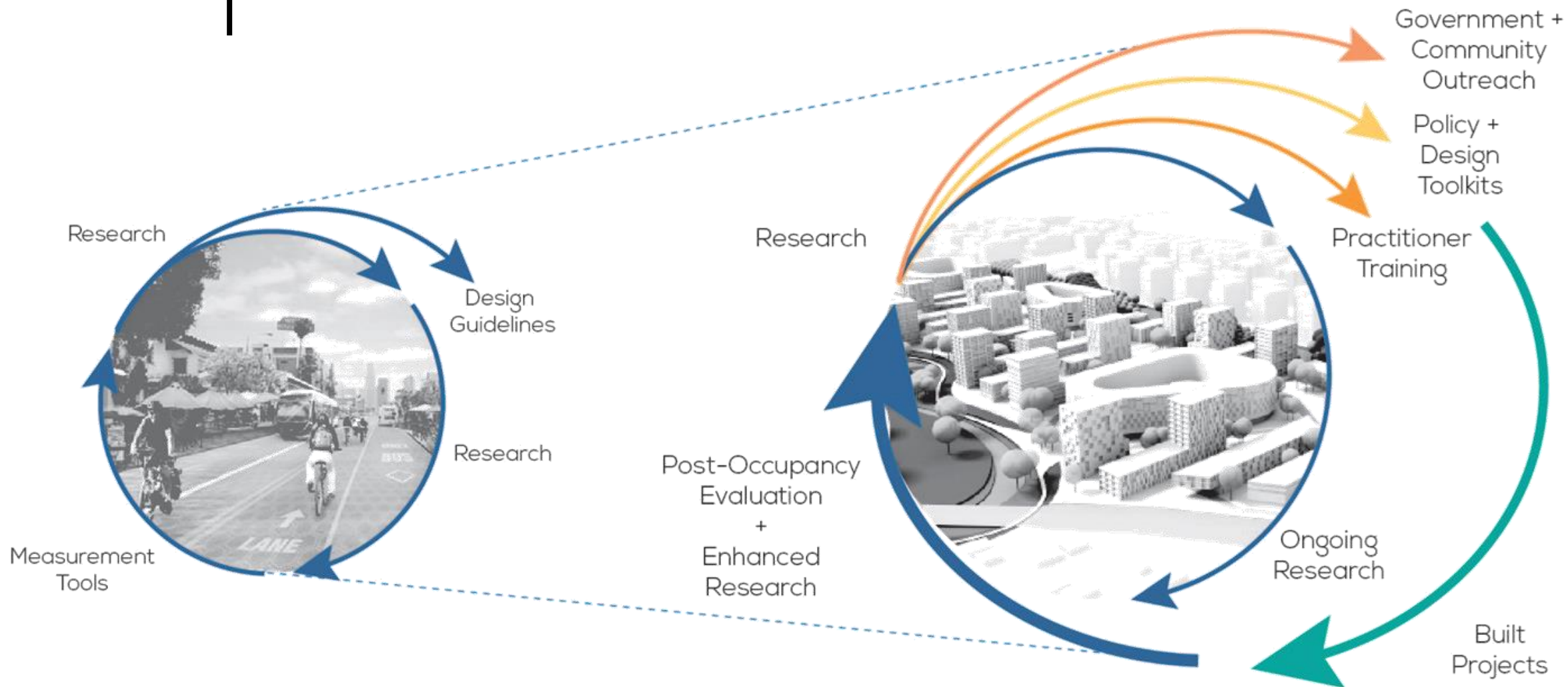
Buildings

Indoor environmental quality
Energy and sustainability
Internal circulation



Landscapes
Ecological health
Social space
Active networks

Enhancing the cycle of design + health research





Mahalo

saracarr@hawaii.edu